

# Stroke Program

## OUTREACH

UAMS | Institute for Digital Health & Innovation  
Stroke Program

Issue 1 | December 2020



## Welcome to the Inaugural Edition of the IDHI Stroke Program Newsletter

This newsletter will provide updates and information on past and upcoming events along with helpful tips for successful outreach events.



## HEROES IN SCRUBS EDITION

# IDHI Stroke Program 2020 Stroke Program Conference

September 22, 2020: Due to COVID-19, the 12th annual Stroke Program Conference was held virtually. However, that did not deter 347 health professionals from across Arkansas from tuning in. The Stroke Program strives to host a conference that gives healthcare providers the most current and up to date information for use in their practice everyday. The Stroke Program team asks all healthcare professionals to continue sending speaker suggestions and conference ideas throughout the year.



*Jefferson Regional Medical Center*



*Baxter Regional Medical Center*



*Ashley County Medical Center*



*Dallas County Medical Center*



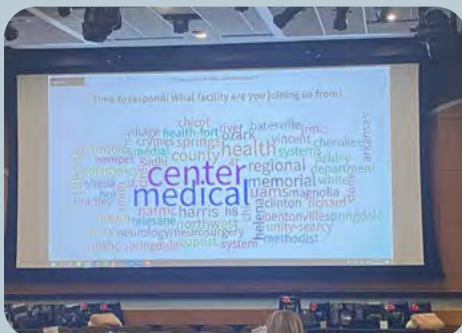
*North Arkansas Regional Medical Center*



*Dr. Onteddu (panel discussion)*



*Renee Joiner and Phillip Martin  
(Director's Choice Award)*



*Poll Everywhere Conference Sign in*



*St. Mary's Regional Medical Center*

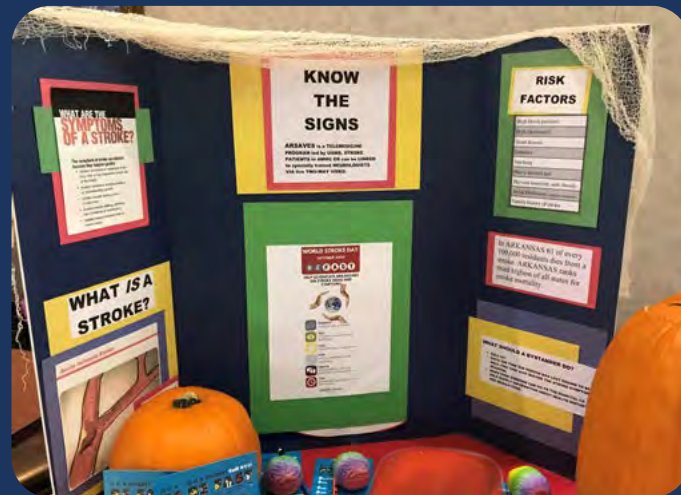


# October Highlights

## World Stroke Day

On October 29th, Genentech provided Stroke Awareness ribbons that were worn by health professionals across Arkansas to raise awareness of signs and symptoms of stroke. Hospitals were challenged to post World Stroke Day graphics and pictures showcasing their ribbons on all social media platforms using **#BEFASTWorldStrokeDay**. Thank you to all participants.

Social Media posts should be included on monthly reports as an active event as long as they are accompanied by another active event.



## Spooky Stroke Pumpkin

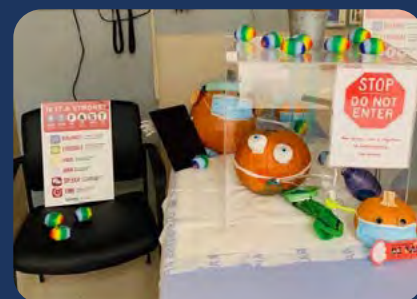
We asked for pictures of Halloween Stroke Awareness Pumpkins and our sites delivered. We would like to thank those of you that participated and have sent in your pictures. There were many creative pumpkins this year and we cannot wait to see what you all create next year!



Arkansas Methodist  
Medical Center



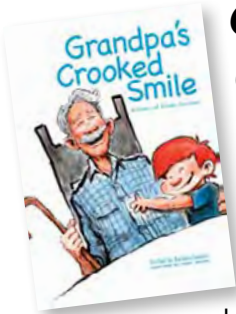
McGehee Hospital



Northwest Medical Center  
Bentonville

**Please remember to attach photos to your monthly reports!**  
You can also email or text them to your Health Educators!

# November Upcoming Events



## Grandpa's Crooked Smile

This November will focus on virtual learning using the Grandpa's Crooked Smile book. It can be read to classes and students virtually.

Click [HERE](#) for the read-along and eBook versions of the book. If you need any copies of the book, please reach out to your health educator.

# December Upcoming Events

## Stroke Awareness Tree Competition!!!

December 1st will kick off our Annual Stroke Awareness Tree Competition!!! Each hospital is tasked with decorating their "tree" with stroke education materials.

Remember to use **#JingleForStroke** and attach photos

to your monthly reports.

You can also email or text them to your Health Educators.

We look forward to seeing your trees!

GOOD LUCK!



# NEW Addition Alert



# Physician Tool Kits

The Stroke Program Community Outreach Team has created and will begin distributing Physician Tool Kits in 2021. This idea was sparked by our innovative Nurse Facilitators from across the state!

These tool kits can be delivered to physician offices and clinics in your communities. Inside will be Stroke Program materials to help educate on the signs and symptoms of a stroke.

Tool kits will include: 1 Physician Letter, 2 BE FAST Posters, 25 Magnets, 25 Pens, and 5 Notepads.

**IS IT A STROKE?**

**B E F A S T**

**BALANCE** Is there a sudden loss of balance?  
difficulties

**EYESIGHT** Is there a change in vision in one or both eyes?  
changes

**FACE** Does their face look uneven?  
weakness

**ARM** Does one arm drift down?  
weakness

**SPEECH** Does their speech sound strange?  
difficulties

**TIME** Time is BRAIN! Call 9-1-1!  
call 911

UAMS | Institute for Digital Health & Innovation

**IS IT A STROKE? BE FAST**

notes

**IS IT A STROKE? Call 911! BE FAST**

**BALANCE** Is there a sudden loss of balance?

**EYESIGHT** Is there a change in vision in one or both eyes?

**FACE** Does their face look uneven?

**ARM** Does one arm drift down?

**SPEECH** Does their speech sound strange?

**TIME** Time is BRAIN! Call 9-1-1!

UAMS | Institute for Digital Health & Innovation

More information will be provided when these are on the website and ready to order!





## Important Websites

### Swag

[arsaves.com](https://arsaves.com)

Password: ARSAVES

### Genentech

[genentechmaterials.com/  
strokeawareness/items.sgi](https://genentechmaterials.com/strokeawareness/items.sgi)

### Stroke Program Website

[arsaves.uams.edu/ar-saves-  
healthcare-professionals](https://arsaves.uams.edu/ar-saves-healthcare-professionals)

Password: STROKEPROGRAM

### Genentech Stroke Urgency Toolkit

[genentechmaterials.com/  
strokeurgencytoolkit/toolkit.sgi](https://genentechmaterials.com/strokeurgencytoolkit/toolkit.sgi)

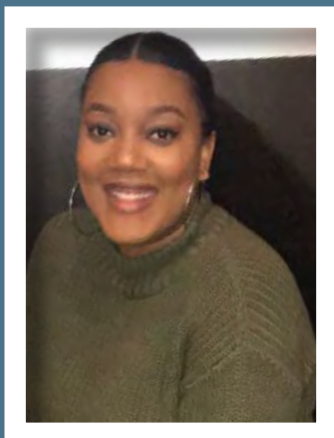
### Peer Review Forms

[arsaves.uams.edu/peer-review-  
forms](https://arsaves.uams.edu/peer-review-forms)

### Learn on Demand

[www.learnondemand.org](https://www.learnondemand.org)  
(user must create an account with LOD)

## Spotlight



### Meet Ariel

Ariel is a native of Pine Bluff, Arkansas.

She attended the University of Central Arkansas where she received degrees in Business Management as well as Health Education and Promotion.

Ariel joined the Stroke Program Team in September 2020 as a Health Educator.

Ariel's motto for life is "Do the best you can until you know better. Then when you know better, do better." Maya Angelou

# REMINDERS



## Community Outreach Calendar

### October 2020

World Stroke Day, Spooky Stroke Pumpkins Competition  
**#BEFASTWorldStrokeDay**

### November 2020

Stroke Education Through Reading (Grandpa's Crooked Smile) **#BEFASTForGrandparents**

### December 2020

Holiday celebrations with stroke education all month.  
Stroke Awareness Tree Competition  
**#JingleForStroke**

### January 2021

Physician Awareness Month  
**#BEFASTForPhysicians**

### February 2021

Minority Stroke Education Month  
**#BEFASTForMinorities**

### March 2021

National Women's Health Month  
**#BEFASTForWomen**

### Mega Brain:

At this time, the Mega Brain is not available for events.

If you are interested in being placed on the Mega Brain request list for 2021 events, email **Ariel Washington** [AWashington3@uams.edu](mailto:AWashington3@uams.edu)

This list is first come first served.

### Photos:

Remember to attach photos to your monthly reports.

### Community Outreach Events:

If you are in need of any assistance with community outreach, please do not hesitate to contact the Stroke Program Health Educators.

#### Olivia Wilson

[OWilson2@uams.edu](mailto:OWilson2@uams.edu)  
501-615-4697

#### Erin Wells

[EEWells@uams.edu](mailto:EEWells@uams.edu)  
501-410-4278

#### Ariel Washington

[AWashington3@uams.edu](mailto:AWashington3@uams.edu)  
501-258-6402



Institute for Digital  
Health & Innovation

Stroke Program